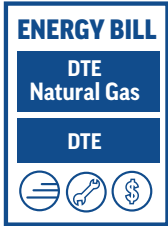
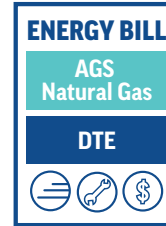
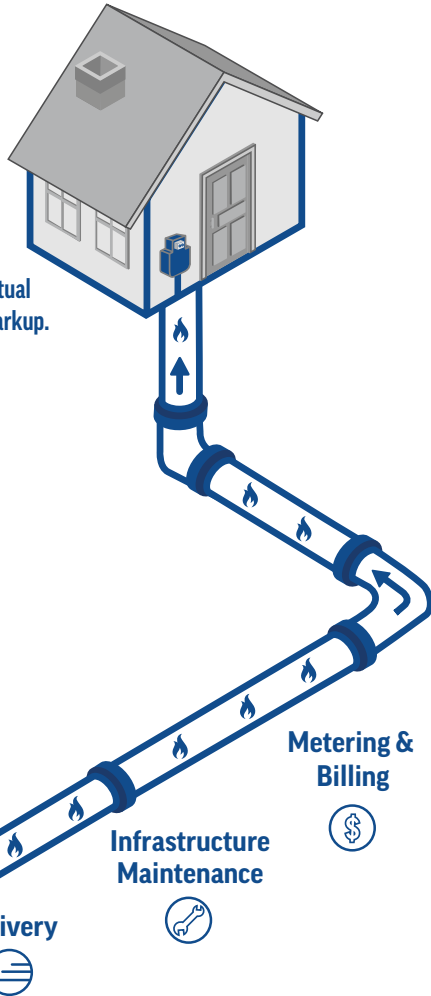


Understanding gas choice



Customers served by DTE pay the Gas Cost Recovery (GCR) rate for the gas you use as well as charges for delivery, maintenance, billing and other costs. The GCR reflects DTE's actual cost for natural gas with zero markup.



If you're served by an alternative gas supplier (AGS), your bill will reflect charges from the supplier for the gas you use as well as charges from DTE for delivery, maintenance, billing and other costs

